

# Palliative Care

## R4HC – MENA

# Palliative Care Work Stream

Richard Harding

Omar Shamieh

Ping Guo

Sawsan Al-Ajarmeh

Ghadeer Al-Arja

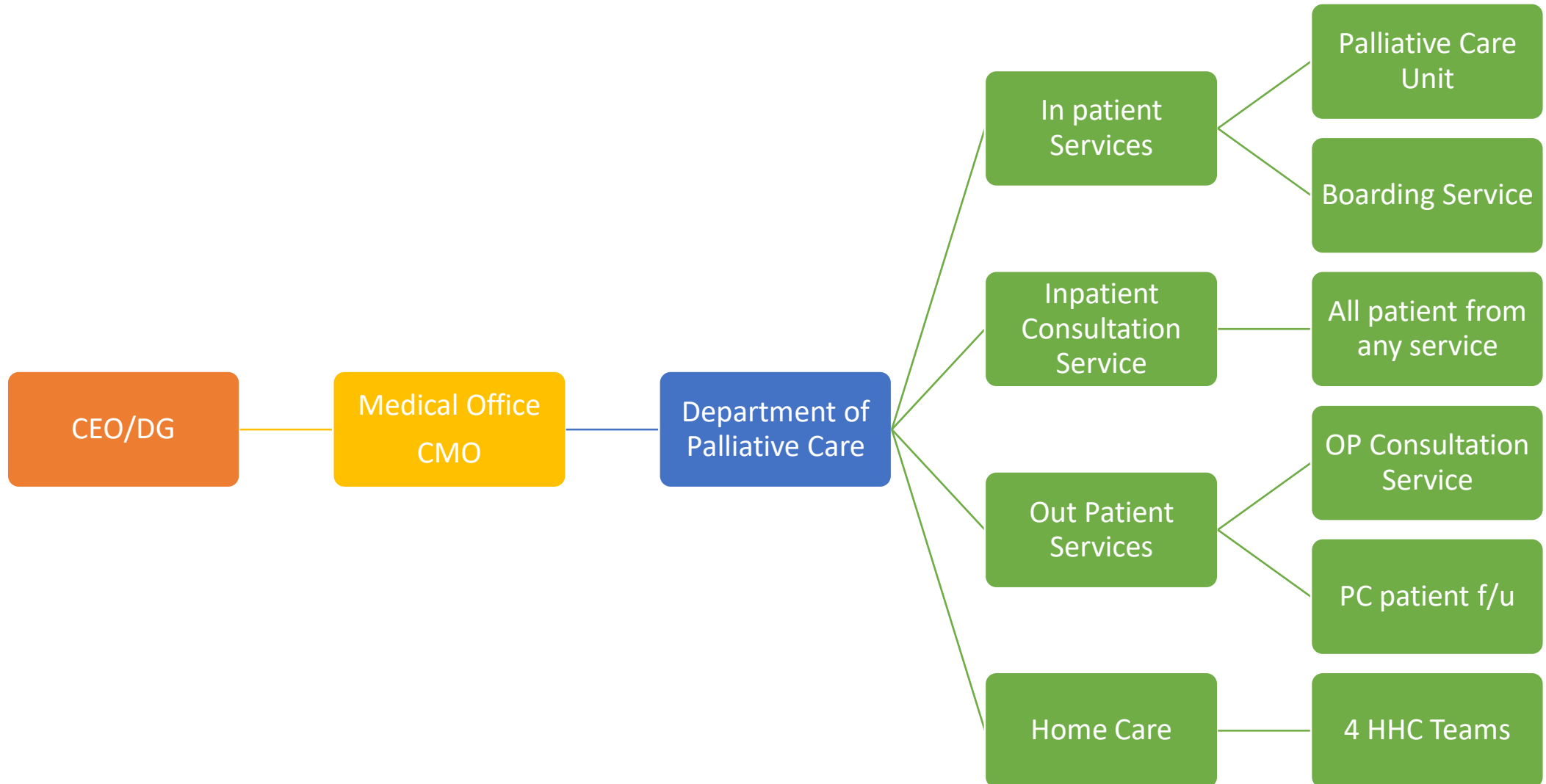
Waleed Al - Rjoob

Richard Sullivan

# Palliative Care in Jordan

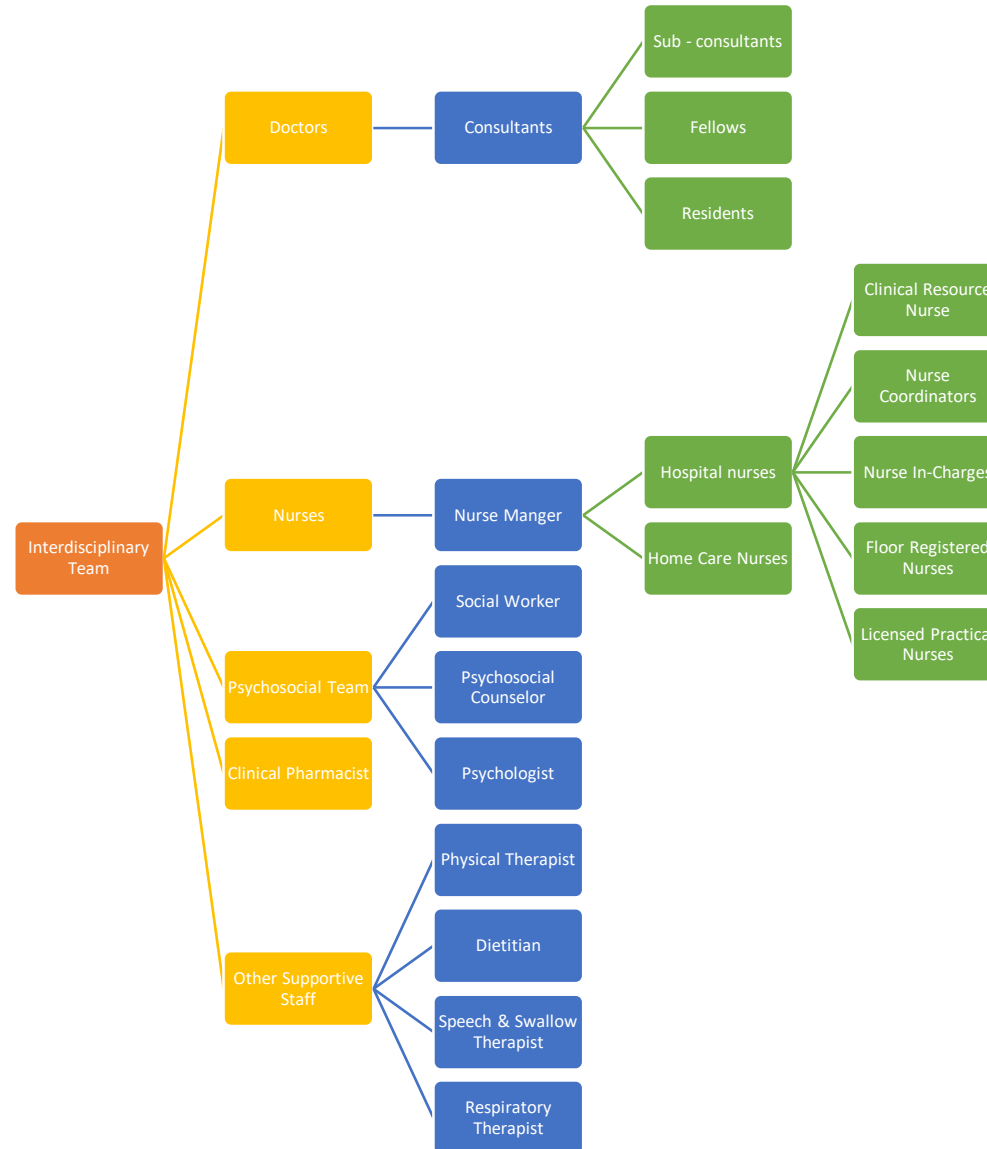
- Al – Malath Hospice – 1993
- National Palliative Care Initiative – 2003
- National Palliative Care Committee – 2003
- Palliative Care, KHCC – 2005
- National Home Initiative – 2015
- National Strategic framework – 2017/2018
- Subspecialty recognition –
  - Medical – 2018
  - Nursing – 2017
- Training
  - Fellowship – 2018
  - Master degree – 2013
  - Diploma 2017/2018
  - Undergraduate – Medical, Nursing
- Research Capacity building
  - R4HC – MENA 2018 – Ongoing

# Palliative Care – 2018





# Interdisciplinary team



# Updates – R4HC – MENA, KHCC/KCL

- Infrastructure
- Research
- Training

# Updates

CPCCC

Approvals

Hiring



# Updates – Research

## Adults

- Palliative need assessment
  - IRB (KCL, MOH, KHCC)
  - Quantitative
    - MOH Death data registry analysis for Jordanian and non- Jordanian
  - Qualitative
    - Al-Basheer Hospital
    - KHCC
      - 23 interviews
      - Transcription, translation, review & analysis

# Updates – Research

## Pediatrics

- Pediatric palliative need assessment
  - IRB (KCL, KHCC, Hacettepe)
  - Qualitative

# Updates – Training

- Qualitative research
  - Principles
    - Richard Harding, Ping, Alesandra
  - Analysis
    - Planned in 2019
- Post graduate training – KCL
  - 4 candidates identified
  - Pending approval

# CPCCC – KHCC

## U may need to partner with university

- Palliative & Cancer Care
  - Shamieh, Sultan, Anwar, Sawsan, Ghadeer, Waleed
- Health in Conflict
  - Sawsan, Kloub, Waleed
- Mental Health
  - Riyadh, Suboh, Kloub, Ghadeer
    - Rate of mental illness, PTSD, effect of war or trauma, Harvard trauma questionnaire
- Political Economy
  - Nedal, Rabiya, Shamieh, Omar PhD
- Infectious Disease Group
  - Sawsan, Abu Ata, Ghadeer
- Surgery Group
  - Ya3qoob, nurse (?Majeda)

# KHCC – Research

- Needs Assessments
- Opioids
- Communication
- Decision Making preferences
- Assessment tools validation
- Cost & Economic Evaluation
- Collaboration
  - KCL
  - MDACC
  - EORTC
  - PMH
  - Yale university

Thank you